

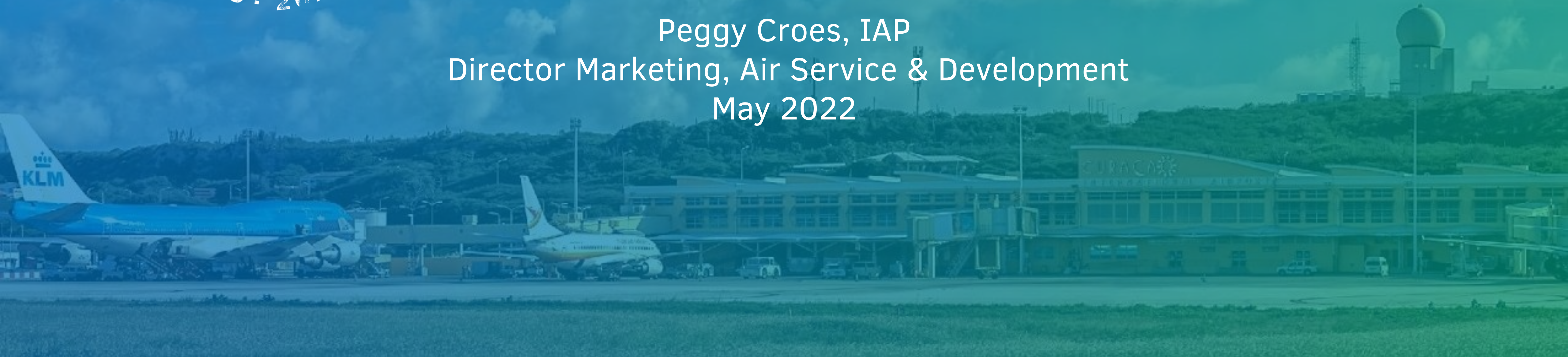


CURAÇAO AIRPORT PARTNERS



## Tales from the Runway – North America

Peggy Croes, IAP  
Director Marketing, Air Service & Development  
May 2022





# Cleared for Landing



## Gateways

### Europe

AMS, BRU

### North America

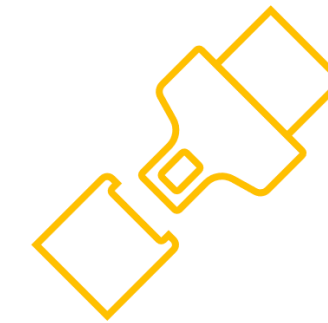
YYZ, YUL  
MIA, CLT, JFK, EWR

### South America

PTY, BOG, MDE, BAQ, PBM

### Caribbean

AUA, BON, SXM, SDQ, PAP, POS, KIN



## Seat Capacity\*

### Total Capacity

1,744,321 (Both Directions)  
+5% vs 2019

\* Source: Cirium



## Valued Partners

### Europe

KL, OR, KF

### North America

AC, WS  
AA, B6, UA

### South America

CM, AV, P5, PY, EZ, J4, SARPA

### Caribbean

J4, EZ, BW, DVR, Air Century  
PY, WN, SkyHigh



# Achievements

2020 & 2021







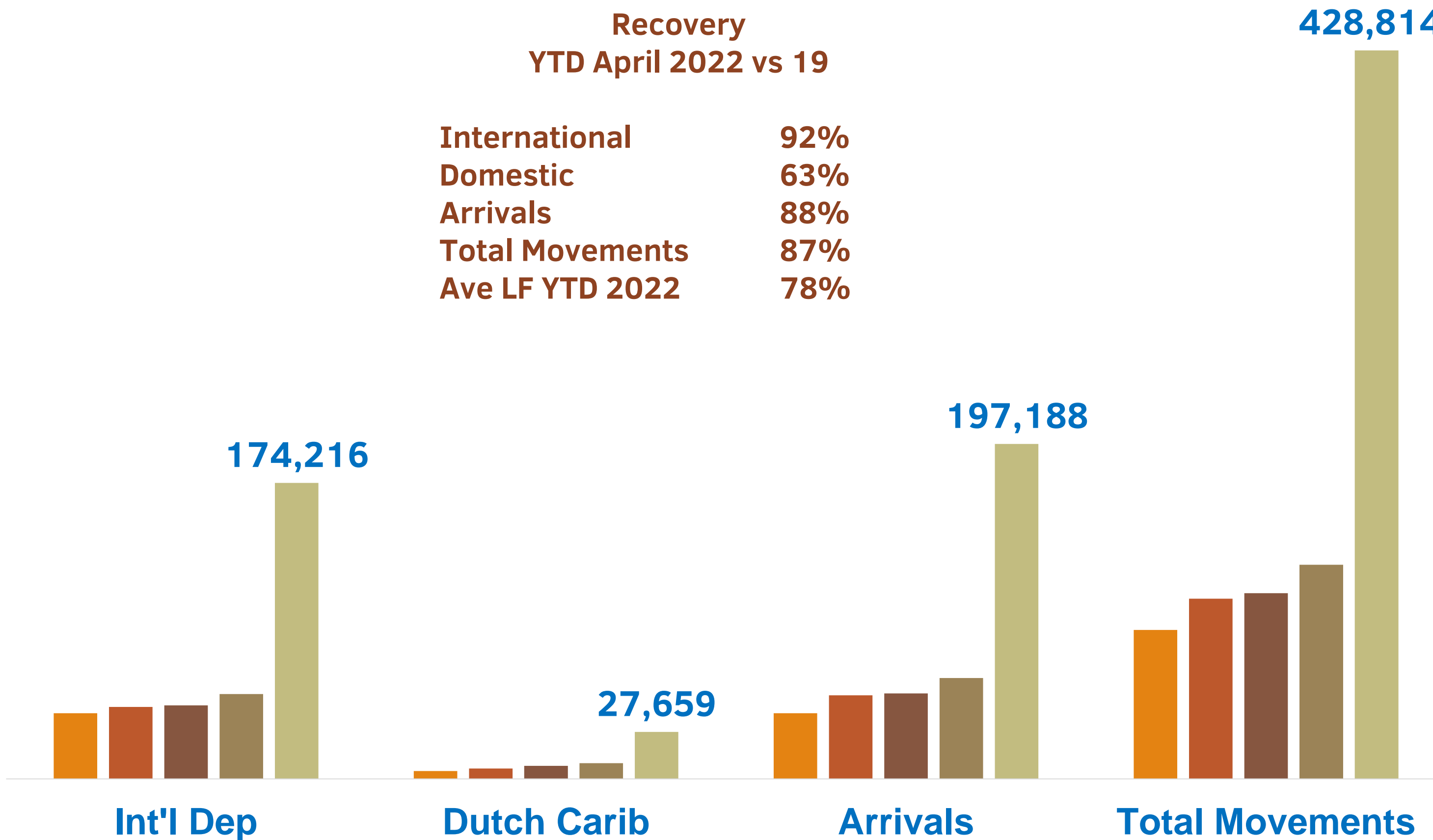
# Passenger Traffic per Segment

## Recovery Monthly Performance

■ 2022 Jan ■ 2022 Feb ■ 2022 Mar ■ 2022 Apr ■ 2022 YTD

Recovery  
YTD April 2022 vs 19

International	92%
Domestic	63%
Arrivals	88%
Total Movements	87%
Ave LF YTD 2022	78%

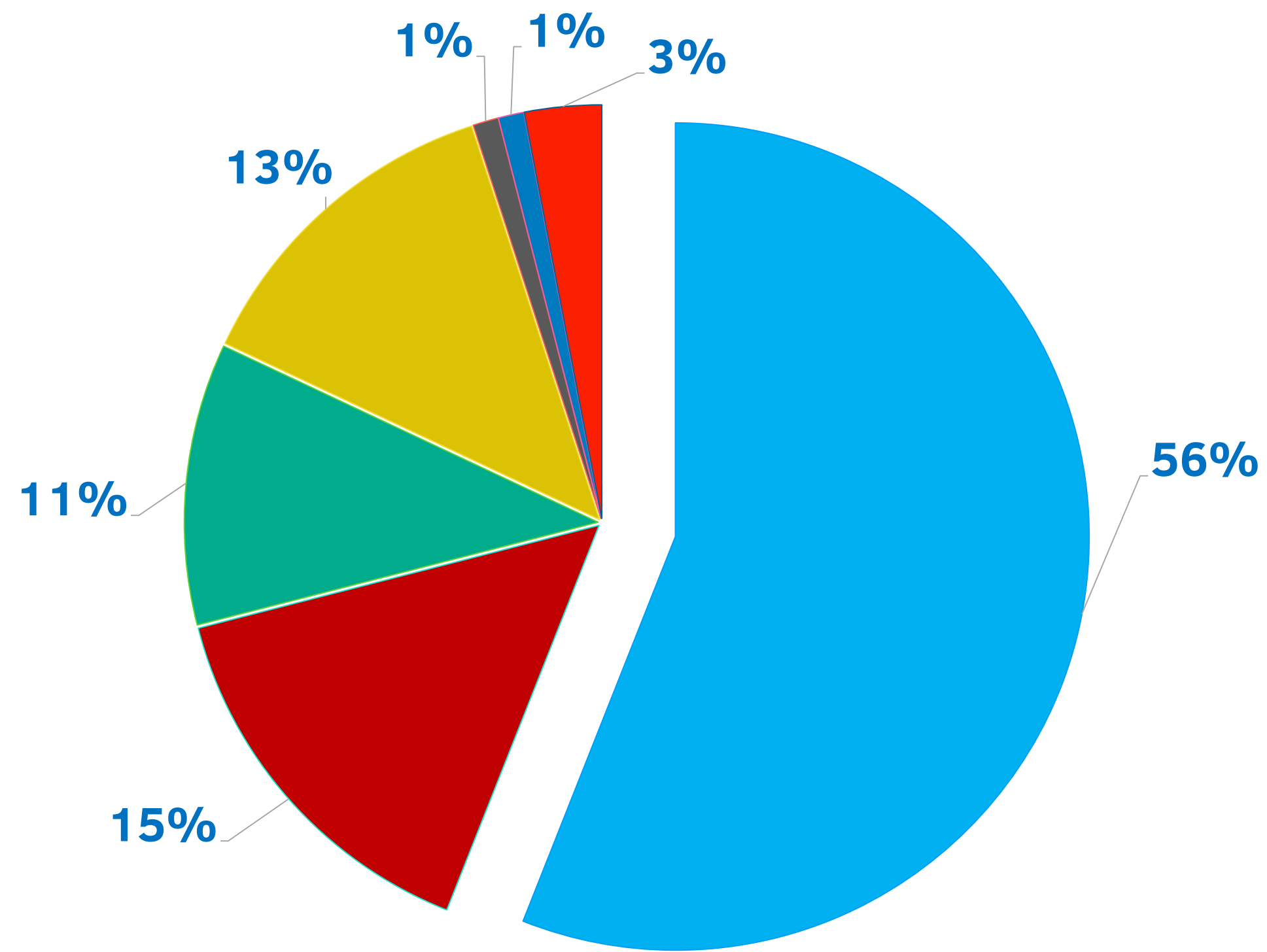


- ✓ Opposite of 2021 YTD figures
- ✓ Ease of entry requirements
- ✓ Pent of Travel Demand
- ✓ Easter / Passover
- ✓ May Holidays in The Netherlands
- ✓ Additional Seat capacity vs 2019
- ✓ Minimal impact and contained Omicron

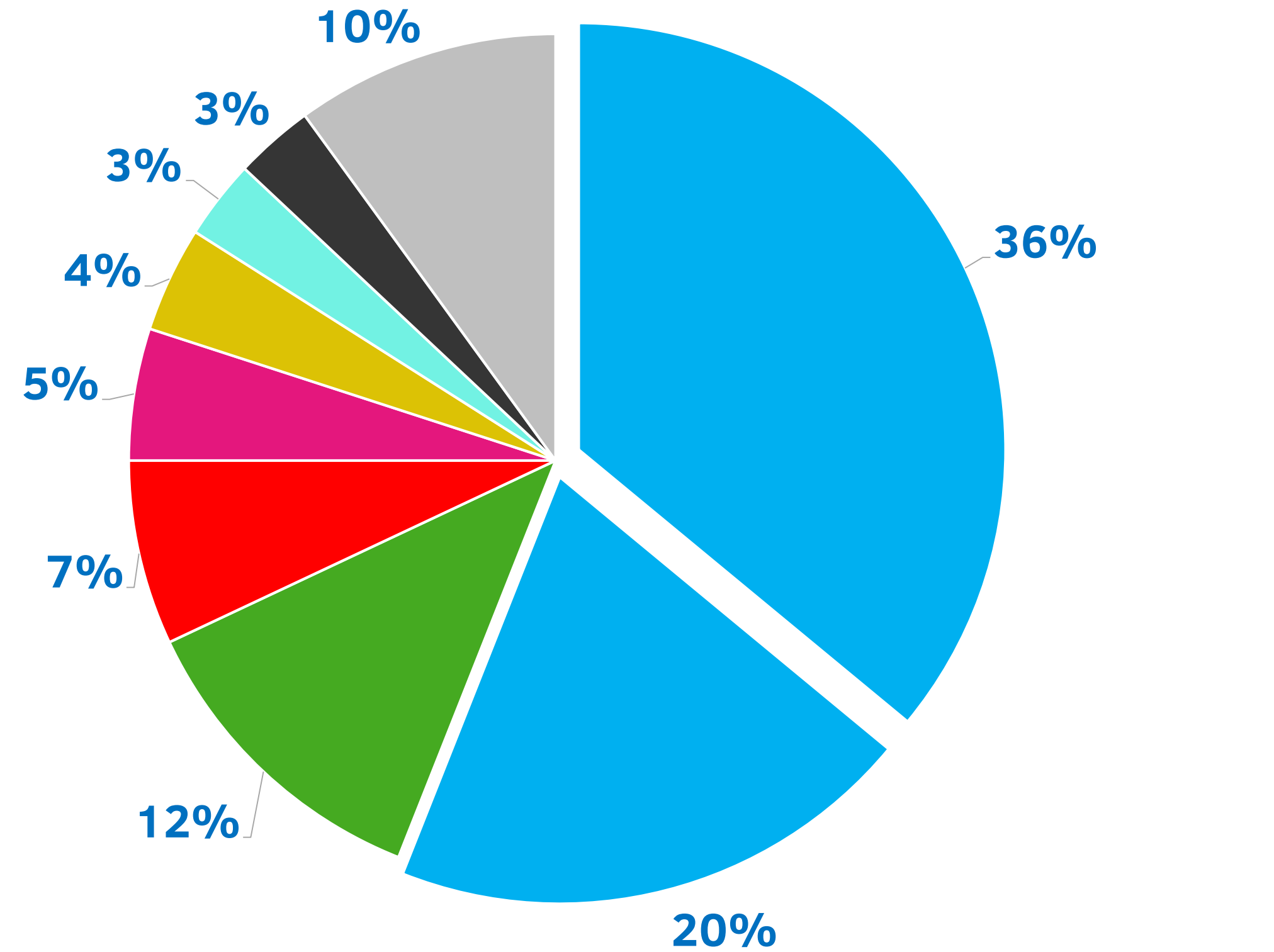
# Air Service

## Passenger Traffic Distribution YTD April 2022

### Gateway



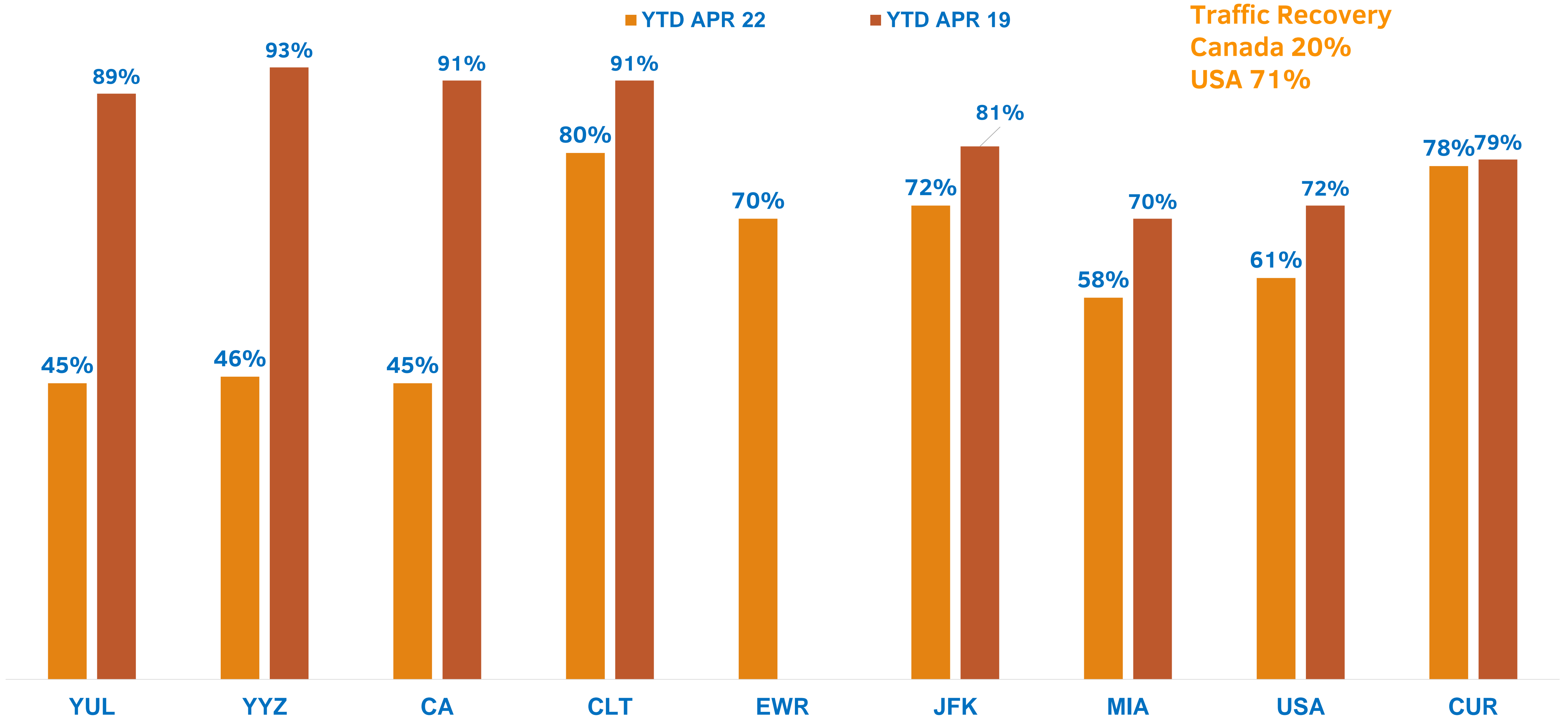
### Airline



■ Netherlands ■ Caribbean ■ South America ■ USA ■ Canada ■ Belgium ■ Other

■ KLM ■ TUI ■ AA ■ DiviDivi ■ AV ■ EZair ■ CM ■ Jetair ■ Other

# Region Overview – North America



Traffic Recovery  
Canada 20%  
USA 71%

# From There to Here

May – December 2022 Inbound

Source: Cirium  
Subject to change



## GATEWAY

## SEATS

## FREQUENCY

## AIRLINE

## FEEDER CITIES

YUL  
YYZ

408  
2,176  
1,231

WEEKLY (DEC)  
WEEKLY (NOV)  
WEEKLY (OCT)

AC A319  
AC A319  
WS B737/8

CLT  
EWR  
JFK  
MIA

3,468  
1,134  
16,200  
79,292

WEEKLY  
WEEKLY (NOV)  
3X WEEKLY  
2X DAILY

AA A319 / B738  
UA B737  
B6 A320  
AA B738/M

ORD  
JFK  
LGA  
BOS  
PHL  
DCA  
EWR  
DEN  
DFW  
MCO  
IAH  
LAX

**Seat Capacity Recovery vs 2019 121%**



# Recovery Outlook

The forecast for the evolution in passenger numbers gives good reason to be **optimistic**:

	2022	2023	2024	2025
<b>Overall</b>	83%	94%	103%	111%
<b>International</b>	69%	82%	92%	101%
<b>Domestic</b>	93%	103%	111%	118%

© IATA

\* Against pre-COVID-19 levels in 2019



Not all markets or market sectors will recover at the same pace.

Full recovery\* to 2019 levels:



© IATA

\* Overall traffic to, from, within the region



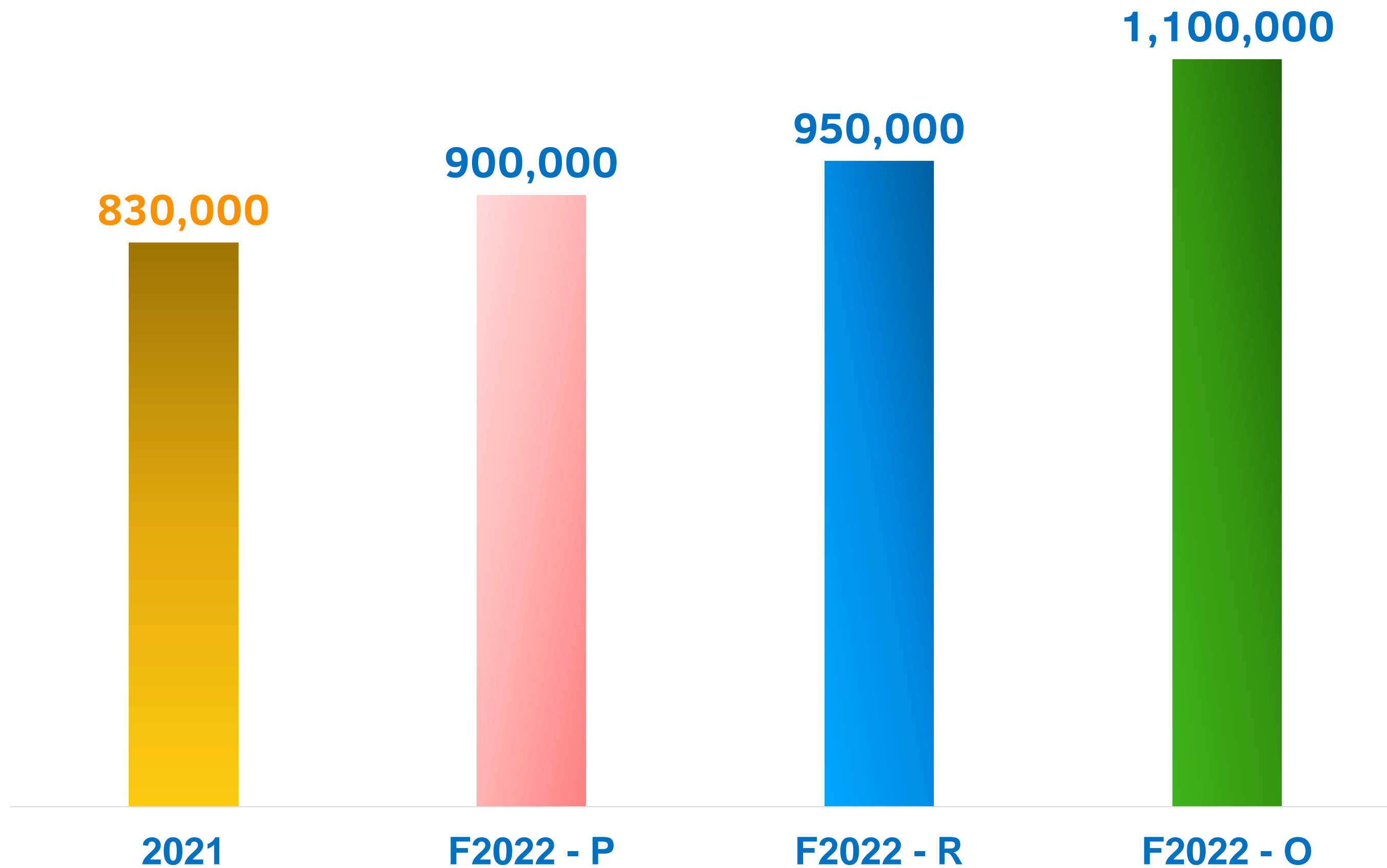
\*\* IATA Forecast does not factor in the impact of the Russian-Ukraine conflict





# Cautiously Optimistic

## Estimated Passenger Movements



### Growth vs 2021

FYE 2022 Pessimistic	+ 8%
FYE 2022 Realistic	+14%
FYE 2022 Optimistic	+33%

### Recovery vs 2019

FYE 2022 Pessimistic	62%
FYE 2022 Realistic	66%
FYE 2022 Optimistic	76%

Estimates are based on current best guestimates and YTD 2021 data



